



LEFT

Brooklyn Bridge

by Ernest Lawson,
1917-1920, oil,
20 1/2 x 24. Collection
Milwaukee Art Museum,
Milwaukee, Wisconsin.

The Eight and American Modernisms

JUNE 6 THROUGH AUGUST 23

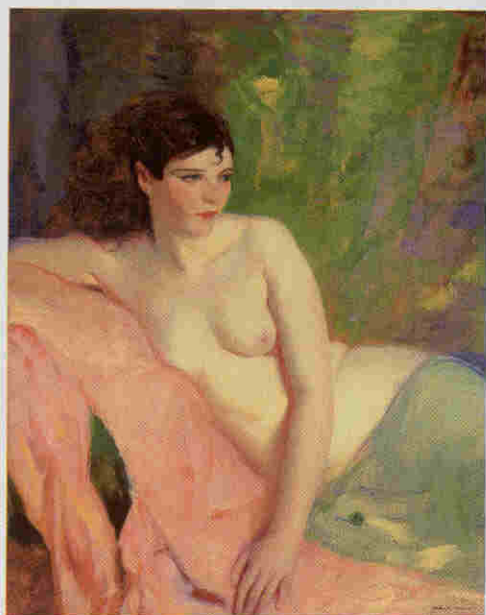
Milwaukee Art Museum
Milwaukee, Wisconsin

www.mam.org

(414) 224-3200

An illustrated catalogue is available.

Selected from three public collections, this exhibition offers work from all members of the group of American artists known as "The Eight." More than 80 paintings by Arthur B. Davies, William Glackens, Robert Henri, Ernest Lawson, George Luks, Maurice B. Prendergast, Everett Shinn, and John Sloan are on display, and the show examines the distinct aesthetic agendas of the eight artists from 1908 to the end of their respective careers. Conventionally, the assessment of the group's artistic partnership has focused primarily on themes of urban realism, but this exhibition explores the idea that the artists included in the group were, in fact, anti-realist or expressionist, painting from memory and imagination.



LEFT

Betalo Nude

by Robert Henri,
1916, oil, 41 x 33.
Collection Milwaukee
Art Museum, Milwaukee,
Wisconsin.

ABOVE

Nightclub Scene

by Everett Shinn,
1934, oil, 36 x 34.
Collection Milwaukee
Art Museum, Milwaukee,
Wisconsin.