

MILWAUKEE ART MUSEUM

SCHOOL AND TEACHER PROGRAMS
ANNUAL SUMMARY REPORT 2006/2007

Annual Summary Report 2006/2007

The Milwaukee Art Museum's Education Department creates programs and materials to foster public engagement with art. We provide visitors with rewarding learning opportunities in the hope that they will gain valuable insight into the Museum's Collection. Our mission is to present art to the community as a vital source of inspiration and education.

The Museum teaches children how to see, understand, and appreciate works of art in a cultural context. We work daily to help children think creatively and understand their diverse and rapidly changing world. Our education programs support the child by linking educational experiences in schools, families, and communities. The below outlines in detail what programs have been offered to Milwaukee-area schools and teachers, and their impact on Milwaukee County.

The Milwaukee Art Museum's role as educator becomes all the more essential as schools continue to cut their art classes. The Museum's school programs and resources are designed for elementary through high school students and teachers. These programs introduce works of art and methods for teaching with objects, explore interdisciplinary curriculum applications, and support State and/or District Model Academic Standards.

Youth Served

80,000 youths participate in Milwaukee Art Museum education programs annually. Student tour attendance at the Milwaukee Art Museum in Fiscal Year 2007 was 60,000. 17,618 student visits were from Milwaukee Public Schools.

Schools Served

745 schools sent their students to the Museum in FY 07.

493 schools in Metro Milwaukee brought their students to the Museum in FY 07.

122 MPS schools came to the Milwaukee Art Museum in FY 07.

| MPS SCHOOLS | | | | |
|----------------------|--------------|--------------|--------------|--------------|
| Type | Total | Traditional | Charter | Partnership |
| Elementary (& K8) | 131 | 111 | 20 | 0 |
| Middle | 26 | 12 | 6 | 8 |
| High | 67 | 23 | 22 | 22 |
| | 224 | 146 | 48 | 30 |
| 06-07 YTD MPS VISITS | | | | |
| Type | Total | Traditional | Charter | Partnership |
| Elementary (& K8) | 90 | 76 | 14 | 0 |
| Middle | 9 | 3 | 4 | 2 |
| High | 23 | 15 | 6 | 2 |
| | 122 | 94 | 24 | 4 |
| Type | Total | Traditional | Charter | Partnership |
| Elementary (& K8) | 68.7% | 68.5% | 70.0% | 0.0% |
| Middle | 34.6% | 25.0% | 66.7% | 25.0% |
| High | 34.3% | 65.2% | 27.3% | 9.1% |
| | 54.5% | 64.4% | 50.0% | 13.3% |

MPS Schools Served

54% of MPS schools visited the Museum in FY 07.

Program Growth

122 MPS schools served FY06/07—up from 66 schools in FY01/02
60,000 student visits in FY 06/07—up from 22,646 in FY00/01

Education Staff

8 plus 150 volunteer docents

Sample Milwaukee Art Museum Education Programs

Students from MPS come on traditional school tours and participate in one of these special programs.

Junior Docent Program

The Junior Docent Program is a three-year program for third through fifth graders involving a series of tours (three each year). This series of repeat visits helps the students build a meaningful understanding of the elements of art and the role that art plays in the cultural history of a people. In the final year of the program, each student studies an individual work of art in depth and gives a round-robin tour to peers and parents at “graduation.” More than 12,000 students have graduated from this program over the past 23 years. Four thousand students from 27 schools are currently enrolled in the Junior Docent Program (11 MPS, 12 Milwaukee Co., 3 Ozaukee Co., 1 Washington Co.). The Museum will add 10 new MPS schools in FY07/08.

Young Author’s Conference

Each November, the galleries become a writing lab for more than 400 students from the greater Milwaukee region. One 7th grader described her experience: “This work of art, along with other pastels, sculptures, paintings and sketches, has a story to be unfurled. An experienced artist doesn’t tell you the whole plot, but gives you a sample, and lets you, the observer, fill in the details. And that is the true beauty of art.” In summer, the program goes statewide with Wisconsin Writes, during which the Museum becomes a writing lab for 200 students from the far reaches of Wisconsin. The works produced by the participating students are compiled and published in a book.

**Milwaukee High School of the Arts Satellite Program**

The Satellite class program, taught in conjunction with the Milwaukee High School of the Arts, provides high school seniors the opportunity to use the Museum as an extended classroom to explore art history, aesthetics, museum processes, and art making. The semester closes with an exhibition of the students’ works. In the 30 years the program has been in place, 23 graduates have gone on to hold jobs at the Milwaukee Art Museum.



Successful artists, designers, business owners, writers, professors, teachers, and professionals in Milwaukee and throughout the world have participated in Satellite, the first of several teen-focused programs at the Museum. These include a director of development at the University of Wisconsin–Madison, an Ecuadorian who has exhibited at the Venice Biennale, a New York fashion designer, a restorer of frescoes in Italy, and the chief preparator at the Whitney Museum of American Art in New York.

Annual Wisconsin Regional Scholastic Art Awards Exhibition

The Scholastic Art Awards, the most prestigious national competition and exhibition for middle and high school art students, draws submissions from young artists throughout the state of Wisconsin. The Milwaukee Art Museum has hosted the Wisconsin Regional Scholastic Exhibition since 1976. Winners from this regional exhibition proceed to the national competition for inclusion in exhibitions in New York City and at the Corcoran Gallery of Art in Washington, D.C. Each year, twenty-three judges select winners from 66 Art Regionals, awarding five National Gold Medal Art Portfolio Awards in the amount of \$10,000 to be used at any college. In 2007, two of the five national Art Portfolio winners, Stephanie Sulik and Allison Wichmann, were from Milwaukee. Both attend Pius XI High School with Instructors Anne Dretzka, Pat Frederick, and Catherine Burnett.

City Collaborations

These programs allow MPS to save on transportation costs and students to experience the arts through various media.

Bucks for Books

Designed to encourage reading by students in Milwaukee schools, this fall program brings 1,000 MPS students to the Museum. After the students take a one-hour guided tour of the galleries, members of the Bucks team read to the individual groups from a book related to the art they had just seen. The day concludes with a pep rally for reading in Windhover Hall, and each student leaves having received new books to start or to add to their libraries at home. A total of 10,000 books are distributed courtesy of Sam's Hope Literacy Foundation.

Milwaukee Symphony Orchestra and Milwaukee Art Museum

For this special tour program, students attend one of four Milwaukee Symphony Orchestra performances, and then visit the Milwaukee Art Museum for a related docent-guided tour. From the preschool "Music for Me!" to the Teen Series, these music concerts and art tours help students discover art through multiple senses and to compare how different forms of media provide alternate means to communicate. This program is organized with 40 schools and 2,325 students.

First Stage Children's Theater and Milwaukee Art Museum

Students grades 3–8 attend a First Stage Children's Theater performance in Lubar Auditorium at the Museum before taking a docent-guided tour of the Collection galleries to explore the various stories artists' portray in their artworks. We have expanded our performance/tour offerings to include the Meet Georgia O'Keeffe Performance and O'Keeffe and Her Contemporaries Tour, along with the On Wisconsin! performance and Wisconsin History in Art Tour.

Reel Flix: An Art and Film Program with the Milwaukee International Film Festival

High school students participating in this program screen films from the Milwaukee International Film Festival and participate in a discussion led by a guest speaker. MIFF films connect to a variety of curriculums and offer a fun way to explore independent film and art. A study guide for each film is provided prior to the Museum visit.



After-School and Community Outreach Programs

The city of Milwaukee and MPS students are the focus of our after-school programs.

Career Ladders

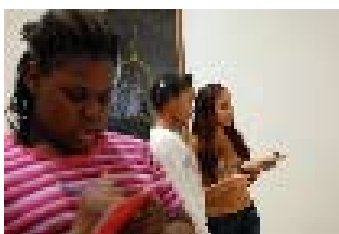
This new initiative provides Milwaukee art-interested teens with jobs in the Museum as they explore and develop their career path. These internships (one or two semesters in length) include professional development seminars and exposure to a range of arts professions both in and outside the Museum.

ArtXpress and Artworks

ArtXpress and Artworks are two after-school high school programs that bring together a diverse group of Milwaukee teens to create a public work of art to address issues in the community in a positive way.

ArtXpress, a four-week paid summer internship program, engages students in learning about city resources, conducting research and interviews, utilizing basic job skills and art-making techniques, and working cooperatively within a group to complete a project. The program culminates in a mural that is exhibited on the side of a Milwaukee County Transit System bus for a year.

ArtWorks, an after-school program in collaboration with the YMCA and Milwaukee Public Schools, offers a two-tiered “teach to learn” program. On the first level, 15–18 year old artist-interns work with professional artists to learn artistic techniques and create a public work of art. Secondly, once they have begun their project, the artist-interns introduce their project and the Museum to elementary-age children from the YMCA, offering instruction and involving them in the public art project. This 8-week program annually serves 15–20 teens and 30 elementary school children.





Art Aloud

Art Aloud is an after-school program developed in cooperation with the Milwaukee Public Library to support literacy through the arts. Held at branch libraries throughout the city, the program brings elementary-age students together with librarians and artist-teachers in a series of nine art workshops that combine art and reading. Art Aloud has provided constructive art activities, increased library use, encouraged creativity and self-expression, and made art resources available throughout the community since 1992. Art Aloud serves an estimated 300 students a year.

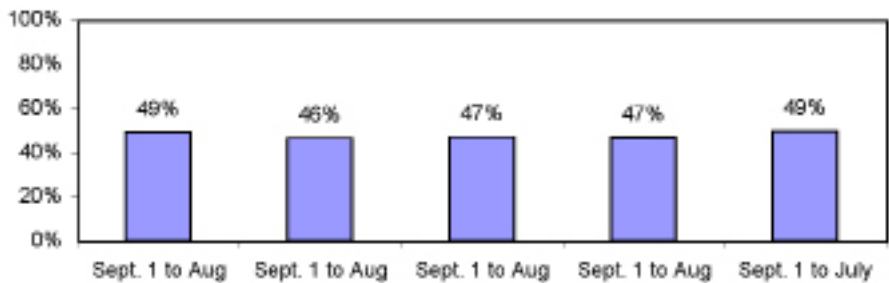
Boys and Girls Clubs of Milwaukee

The Boys and Girls Clubs are Milwaukee’s largest youth-serving agency with a membership of 30,000. The Milwaukee Art Museum offers programs to support the Boys and Girls Clubs in one of the club’s core program areas: arts and cultural education. Our initiative includes waiving the general admission fee to the Museum’s Family Sundays events. In addition, the Museum hosts all 26 Clubs for a series of Boys and Girls Club Days to introduce members to the Museum through hands-on workshops, discovery art games, and drawing in the galleries—all designed especially for them.

Visitation and Membership by Milwaukee County Residents

Milwaukee Art Museum Visitors

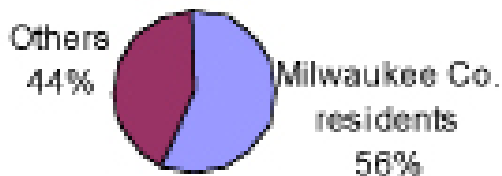
Percentage of visitors that are Milwaukee County Residents
September 1, 2002 to Present



Milwaukee Art Museum Membership

Nearly 60% of the Milwaukee Art Museum’s current Members are Milwaukee County residents, 10,700 people as of July 12, 2007.

2007 Milwaukee Art Museum Membership



Milwaukee County Free Day

From FY2003 to the present, 36,000 Milwaukee County residents (an average of 7,200 annually) have been admitted to the Museum free of charge on "Milwaukee County Free Day." An average of 131 Milwaukee County residents take advantage of Milwaukee County Free Day each week. Televised public service announcements are currently building interest in Milwaukee County Free Day.