

SUPPORT GROUP MEMBERSHIP LEVELS

(All membership levels include one household or one individual plus a guest.)

African American Art Alliance

Patron \$100 Benefactor \$300 Philanthropist \$500

American Arts Society

Patron \$100 Benefactor \$300 Philanthropist \$500

Contemporary Art Society

Benefactor \$300 Philanthropist \$500

Fine Arts Society

Patron \$100 Benefactor \$300 Philanthropist \$500

Friends of Art

FOA Member \$50

Garden Club

I am interested in joining the Garden Club. Please contact me.

Photography Council

Patron \$100 Benefactor \$300 Philanthropist \$500

Print Forum

Patron \$100 Benefactor \$300 Philanthropist \$500

Please also accept my additional contribution of \$ _____ to support the Museum's Exhibition Fund.

TOTAL AMOUNT ENCLOSED \$ _____

PAYMENT

Check enclosed (payable to Milwaukee Art Museum)

American Express VISA Mastercard Discover

ACCOUNT # _____ EXP. DATE _____

SIGNATURE _____

RETURN TO

Milwaukee Art Museum Support Groups
700 North Art Museum Drive
Milwaukee, WI 53202

For more information, please call 414-224-3200 or email supportmam@mam.org.



Werner Mantz, *Pressa at Night*, 1928. Purchase, with funds from Christine Symchych, the Photography Council, and the Richard and Ethel Herzfeld Foundation Acquisition Fund.

PHOTOGRAPHY COUNCIL

Founded 1988

The Photography Council allows Museum Members with an interest in the art and history of photography to enrich their knowledge through an annual program of events, from lectures with distinguished guests such as Saul Leiter, John Szarkowski, and Danny Lyon to seminars on collecting, conservation, and connoisseurship. The council also raises funds to support photography exhibitions and the Museum's acquisition of photographs for its Collection.

PRINT FORUM

Founded 1980

Print Forum covers a wide range of interests in works on paper, from Old Master to modern and contemporary prints and drawings. The organization sponsors lectures, workshops on connoisseurship and printmaking techniques, field trips, and opportunities for members to build their personal collections. Further, Print Forum provides support for acquisitions of prints, drawings, and artists' books for the Museum's Collection.



Peregrine Honig, *Glass Slipper*, from the portfolio *Father Gander*, 2005 (detail). Purchase, with funds from Print Forum, Christine Symchych, and an anonymous donor.



art lovers and collectors unite!

Become more involved with the Museum and broaden your knowledge of art by joining one or more of the Museum's eight support groups. Each group represents a specific interest area within the Museum and its Collection, and brings together people with similar interests to socialize, learn, and support the Museum. Support group members enjoy unique benefits such as educational lectures, opportunities to travel, tours of exclusive collections, artist talks and gallery walks, and various other special events.

There is room for every interest and level of experience—from the novice to a veteran in the art world—so read on to find the group(s) that best matches your personal interests and join today!



CAS trip to the Getty in Los Angeles, CA.



FAS-organized event to raise funds for acquisitions of Biedermeier art.



MILWAUKEE ART MUSEUM

700 NORTH ART MUSEUM DRIVE
MILWAUKEE, WI 53202

414-224-3200 | www.mam.org

MILWAUKEE ART MUSEUM

support groups

RY ART SOCIETY CONTEMPORARY ART SOCIETY CON
B GARDEN CLUB GARDEN
Y COUNCIL PHOTOGRAPHY COUNCIL PHOT
DRUM PRINT FORUM PR
E **AFRICAN AMERICAN ART ALLIANCE** A
FINE ARTS SOCIETY FINE
Y **AMERICAN ARTS SOCIETY** A
DS OF ART FRIEND
TY **CONTEMPORARY ART SOCIETY** C
ARDEN CLUB GA
L **PHOTOGRAPHY COUNCIL** P
M PRINT FORUM
AN ART ALLIANCE AFRICAN AMERICAN ART
Y **FINE ARTS SOCIETY** FINE
TS SOCIETY AMERICAN ARTS SO
RT **FRIENDS OF ART** F
ORARY ART SOCIETY CONTEMPORARY
B **GARDEN CLUB** GA
APHY COUNCIL PHOTOGRAPHY
M **PRINT FORUM** I
FRICAN AMERICAN ART ALLIANC
FINE ARTS SOCIET
AMERICAN ARTS SOCIETY
DS OF ART FRI



Kehinde Wiley, *St. Dionysus*, 2006. Gift of the African American Art Alliance in honor of their 15th Anniversary, with additional support from Valerie A. Childrey, MD, and Sande Robinson.

AFRICAN AMERICAN ART ALLIANCE

Founded 1990

AAAA was established when community volunteer Dorothy Nelle Sanders enlisted the assistance of Mrs. Lucinda J. Gordon and Mrs. Gloria Wright to form a group for those interested in African American art. AAAA regularly hosts informal dinners/lectures, sponsors events featuring notable African American artists such as Gordon Parks, Lois Mailou Jones, and Kehinde Wiley, and raises money for the acquisition of African American art for the Museum's Collection.

AMERICAN ARTS SOCIETY

Founded 1993

AAS is for those with an interest in American art, decorative arts, and architecture from the colonial era into the twentieth century. The society sponsors lectures, workshops, trips, and other programs that heighten awareness of American craftsmanship and design. AAS further promotes acquisitions and the conservation of American arts by means of gifts, donations, and bequests to the Museum.

Eugene Deutch, *Bird Bowl*, ca. 1954. Gift of the American Heritage Society and the Layton Art Collection in honor of Glenn Adamson.



CONTEMPORARY ART SOCIETY

Founded 1982

CAS provides a forum for those interested in increasing and sharing their knowledge of and appreciation for contemporary art. Members have opportunities to meet influential artists and experts such as Dennis Oppenheim, Fred Tomaselli, Robert Storr, and Gilbert & George, and to travel to other museums, international art fairs, and world-class private collections. CAS hosts a biennial art auction to raise money for the acquisition of contemporary works for the Museum's Collection.



Amy Sillman, *P&H*, 2007. Oil on canvas. Purchase, with funds from Contemporary Art Society.

FINE ARTS SOCIETY

Founded 1987

FAS strives to increase community knowledge and appreciation of European art by promoting interest in the Museum's exhibitions and Collection, and by organizing related educational programs and unique travel opportunities. FAS also supports acquisitions, and encourages private donations of European art to the Museum's Collection.



FRIENDS OF ART

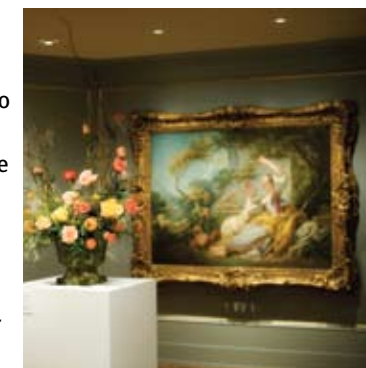
Founded 1957

FOA is the primary volunteer support organization of the Museum, with over 1,300 individuals volunteering each year to help with FOA's fundraising events, such as Bal du Lac, Lakefront Festival of Arts (LFOA), and Perfect Pairings, which help the Museum bring numerous world-class exhibitions to Milwaukee and acquire art for its Collection. Volunteers represent a broad range of lifestyles and enjoy the camaraderie that comes with being a part of a group of dedicated and passionate arts supporters.

GARDEN CLUB

Founded 1921

The Garden Club was created to advance the fine art of gardening, floral arranging, landscape design, horticulture, and conservation, and their physical, educational, recreational, and aesthetic benefits. The Garden Club is the presenting sponsor of Art in Bloom, a four-day exhibition and garden-related event at the Museum, and has enjoyed the company of prominent speakers such as Penelope Hobhouse, Rosemary Verey, and Topher Delaney.



LEFT Nardo di Cione, *Madonna and Child*, ca. 1350. Purchase, Myron and Elizabeth P. Laskin Fund, Marjorie Tiefenthaler Bequest, Friends of Art, and Fine Arts Society; and funds from Helen Peter Love, Chapman Foundation, Mr. and Mrs. James K. Heller, Joseph Johnson Charitable Trust, the A. D. Robertson Family.



join or renew today!

You must currently be a Member of the Museum to qualify for membership in a Museum support group. Call the Membership Hotline at 414-224-3284 or visit www.mam.org to join or renew your Museum membership today!

NAME(S)

ADDRESS

CITY, STATE, ZIP

HOME PHONE

WORK PHONE

EMAIL